

Aggas B2 Blizzard Bag #2

Learning Target: I can read a text on my instructional level and answer comprehension questions based on what I've read.

Building a Railroad to Cross the Country

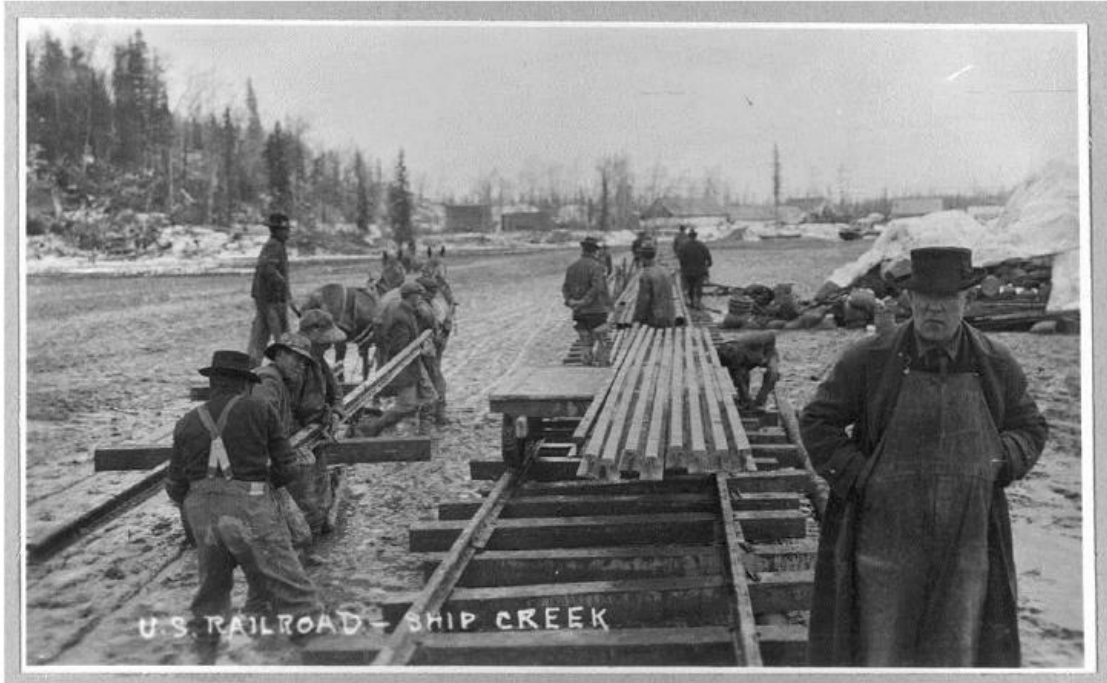


Photo Credit: Library of Congress

Over 200 years ago, it was difficult to travel across the United States. There were a few railroad trains, but none of those trains crossed the country. People traveling across the United States went by horse and wagon. It took months to travel that way.

So 150 years ago, people started building a new railroad. This railroad would connect the East Coast to the West Coast. Building the railroad was hard work. People worked in bad weather. They had to blast holes in mountains to make tunnels.

The railroad took six years to complete. When it was done, people could travel across the country much more easily.

Directions: Use the passage to answer the following questions.

1. Where was it difficult for Americans to travel over 200 years ago?

- A) across the United States
- B) from their house to a store
- C) from town to town

2. What problem made it difficult to travel across the United States?

- A) People got lost because there were no maps to show them the way.
- B) Traveling by horses and wagons took a long time.
- C) There were not enough gas stations for people to fill their car up with gas.

3. Building the railroad across the United States was hard work. What part of the passage shows us that this is true?

- A) People could travel across the country more easily when the railroad was done.
- B) People started building the railroad 150 years ago.
- C) People worked in bad weather.

4. What is the main idea of “Building a Railroad to Cross the Country”?

- A) Travel across the United States by horse and wagon was slow.
- B) The railroad that was built across America took six years to complete.
- C) A railroad was built in the United States to connect one side of the country to the other.

8. **Class Discussion Question:** Explain why the new railroad was helpful.
